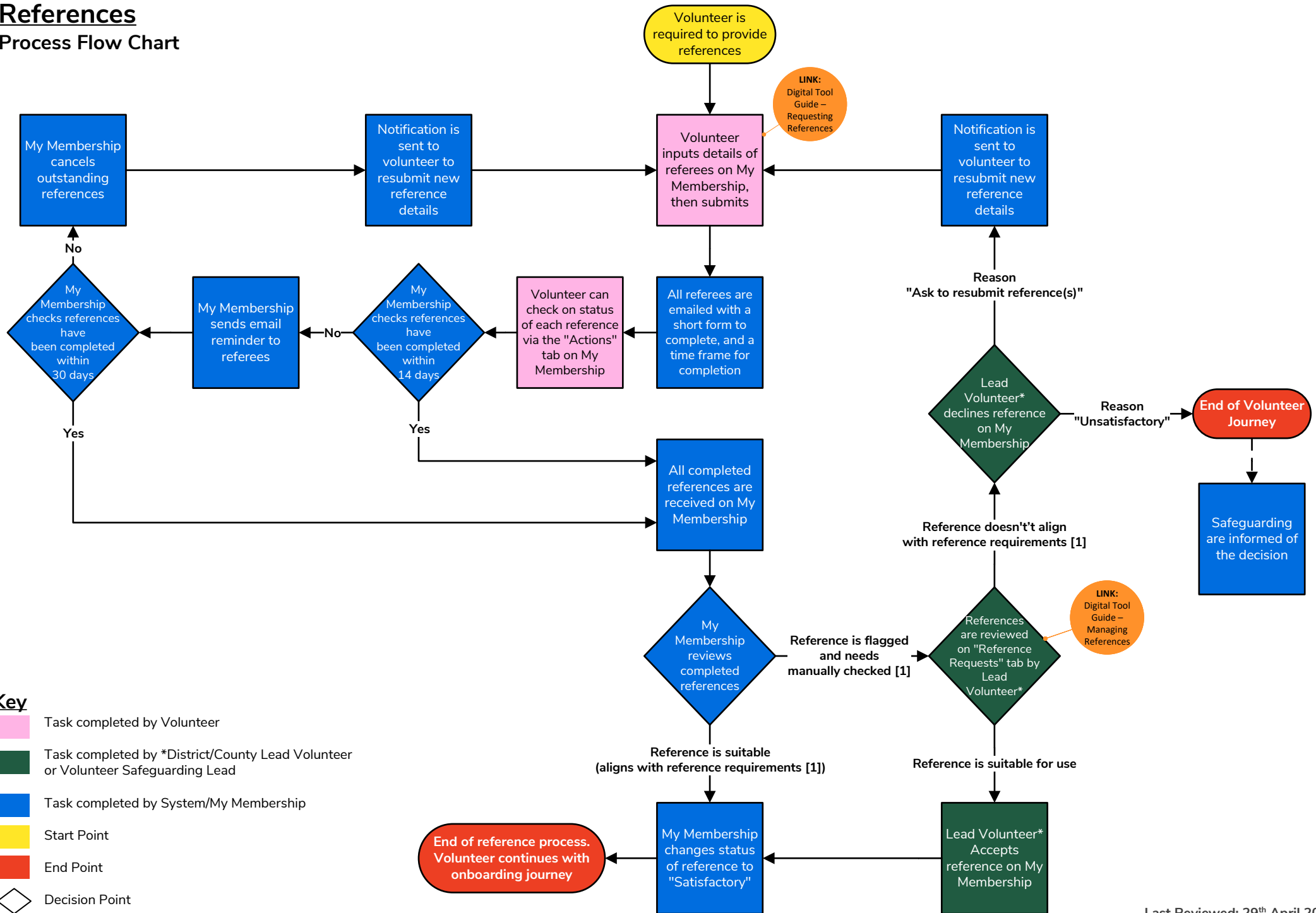


References

Process Flow Chart



- Key**
- Task completed by Volunteer
 - Task completed by *District/County Lead Volunteer or Volunteer Safeguarding Lead
 - Task completed by System/My Membership
 - Start Point
 - End Point
 - Decision Point

References

Process Flow Chart

Footnotes

[1] Reference Requirements - Referees should be familiar with the applicant's work or interactions with young people and be able to speak to their character and relationships with others. Referees must not be relatives. At least one referee must have known the volunteer for at least five years and one referee must be external to Scouts.

Further Information

Last reviewed: 29th April 2025

If you have been sent this process flow chart, please ensure you are viewing the most up-to-date version. You can download the latest version by going to: <https://www.scouts.org.uk/volunteers/volunteer-experience/digital-tool-guides/references/>

or clicking the button below:

[Digital Tool Guide - References](https://www.scouts.org.uk/volunteers/volunteer-experience/digital-tool-guides/references/)