

# Travel, Kit & Data

**Stu Osborne**  
Jamboree Journey



# Let's look at your journey



\*There will be stopovers



# **What to Consider as part of your Unit Travel to the Jamboree**

**#UK26WSJ**

# Travel – The Journey



- The coaches will have an on-board toilet
- There will be rest stops
  - Short rest every 2-2.5 hours (10-15 mins)
  - Longer rest every 4.5 hours (30 mins)
- We are reviewing the accessibility needs of the units for appropriate coaches

# Travel – Your Kit



- Coaches are big and space is at a premium
  - 40 Holdalls
  - 40 Backpacks
  - 2 Unit Kit bags
- An Independent panel will be reviewing any needs for additional support requirements (including bags) at a later date

**Reflect honestly – What is truly needed for this event**

# Travel – Smart Packing



- Your backpack should have your essentials
- Pack them for the stopover time – including clothes
- Let the holdall stay on the coach



# Jamboree Kit

#UK26WSJ



### Confirmed kit

- UK Contingent Scarf/Neckers
- UK Contingent badges
- UK Contingent T-Shirt
- Backpack
- Wheeled holdall
- Water Bottle

### Optional kit

- Our best in class team at Scout Store supporting
- We will have an optional kit catalogue made available later in the year
- This will be available as a pre order window for a defined time
- Delivery planned for 2027
- There will be items accessible to all

# What about recommendations?



- Jamboree App will be made available to young people later this year
- Recommendations to help support deciding personal kit they may wish to buy

# Unit Kit

**Kit that is given to the Unit for their travel and on event**

- This kit may provide autonomy
- This kit may provide accessibility
- This kit may provide a little quality of life



**We want your  
input!**



# Data

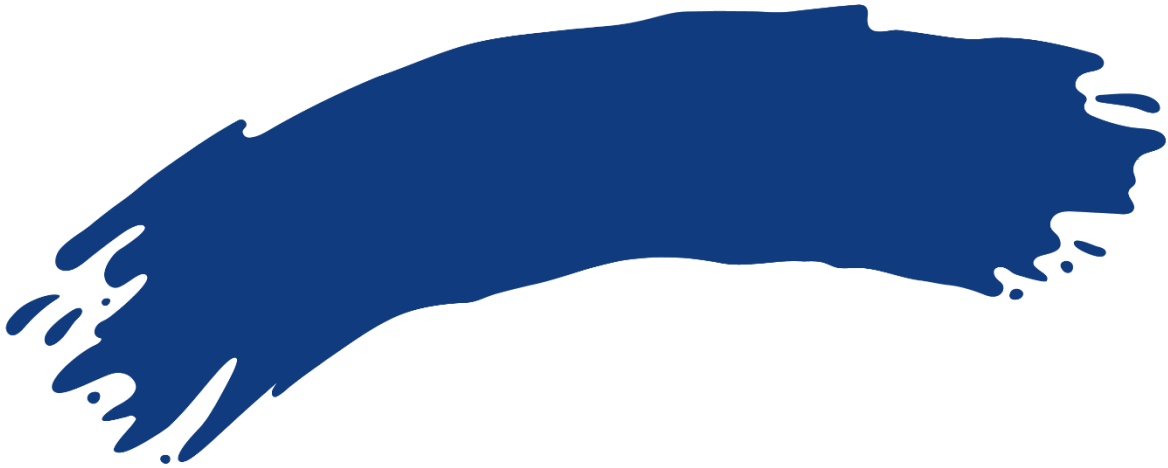
#UK26WSJ

# What we have collected so far



- Local Scouting
- Passport
- GHIC
- Medical/Dietary
- Additional assistance
- T shirt size
- Equality monitoring

# How do I see my unit's data?



#UK26WSJ