

Safeguarding Leaders Input 07/03/26

Llorien To
Safeguarding
Manager, Scouts
HQ



Objectives for today's session



- 1. To demystify the Safeguarding Team and help make us feel less terrifying**
- 2. To understand how this differs from weekly Safeguarding**
- 3. To build confidence and familiarity with safeguarding reporting requirements on a Jamboree team**



Understanding and Humanising the Safeguarding team

Who we are...



Llorien To
Safeguarding manager



Sarah Bagnall
Safeguarding Officer



Gemma Kenealy
Safeguarding Development
Officer

Policies



Scouting and alcohol

Checklist for adults



Scouts

scouts.org.uk/safeguarding



Young people first

Safeguarding – a code of practice

This card contains essential information for all adults in Scouting. Please keep it with you at all times.



Scouts

Version 7. Nov 2018
scouts.org.uk/safeguarding



Safe Scouting and what to do in an emergency...

This card is for all adults in Scouting.
It contains essential information
– keep it with you.



Scouts

scouts.org.uk/safety



Who the Safeguarding Team Are and How They Support Leaders



Supportive Role to Leaders

The safeguarding team acts as a supportive partner offering expert guidance and practical help to leaders during safeguarding situations.

Expertise in Sensitive Cases

The team is skilled in managing cases like emotional distress, peer conflict, boundary concerns, and serious allegations with empathy.

Collaboration and Communication

They liaise with agencies, event management, and families to ensure aligned, appropriate, and legally compliant safeguarding actions.

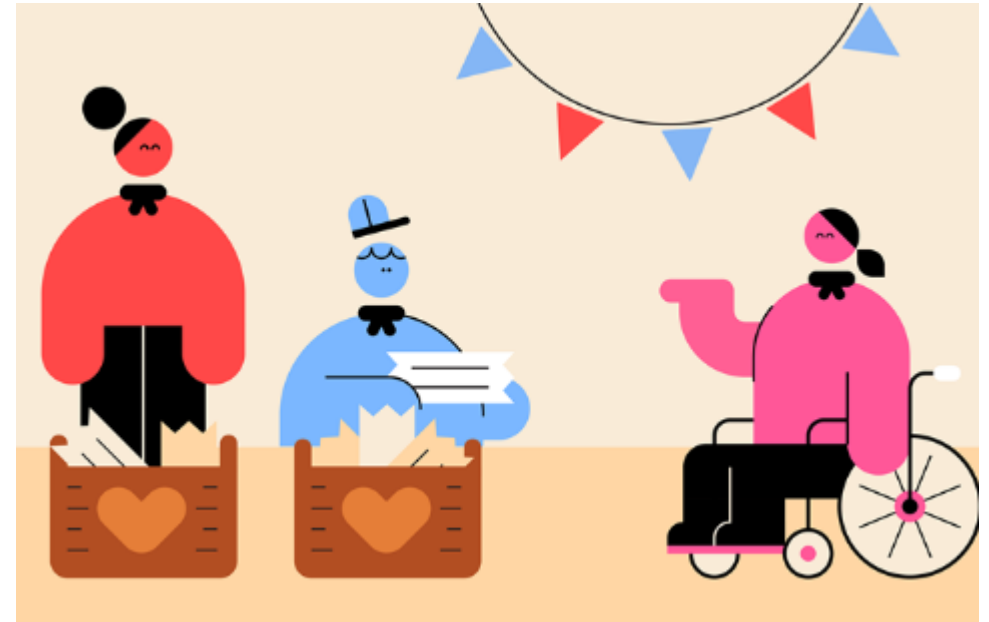
24/7 Availability and Reassurance

The safeguarding team provides constant visibility and availability to reassure leaders and participants that support is always accessible.

Welfare and Care Plans



- Welfare plans
- Care plans
- Behaviour expectations
- Communication with parents
- Communication with young people
- Scout Law/Promise
- Safeguarding policy / yellow card
- Reporting concerns early to us



Safeguarding and welfare



Safeguarding and Welfare

Eyes and Ears

Low Level Concerns

Support





POLAND 2027
26TH WORLD SCOUT JAMBOREE

UK CONTINGENT

**To understand how this differs
from weekly Safeguarding**

Summary of Key Differences



Scale and Complexity

Jamborees host thousands from many countries, creating complex environments unlike weekly meetings.

Increased Risks and Challenges

Risks include missing persons, crowd stress, cultural misunderstandings, sensory overload, and emotional fatigue.

Safeguarding Adaptations

Leaders need heightened vigilance, proactive risk management, and cultural sensitivity at Jamborees.

Environmental and Physical Factors

Climate, hydration, physical demands, and long days increase safeguarding challenges at Jamborees.



Safeguarding at WSJ



- Thousands of participants from different countries
- High energy environment
- Different cultures and laws
- Different environment
- Peer on peer issues across contingents
- Cultural misunderstandings
- Overwhelm/homesickness
- Social media misuse
- Missing young people
- Inappropriate physical contact
- Heat related medical concerns
- New relationships/friendships



**To build confidence and familiarity with
safeguarding reporting requirements on a
Jamboree team**



Centralised Reporting System

- Zendesk acts as the main hub for reporting all safeguarding concerns efficiently and securely during the Jamboree.

Detailed and Secure Entries

- Leaders must provide clear, factual details including quotes, timings, and involved parties to aid quick risk assessment.

Attachment and Documentation

- Supporting documents like screenshots and emails can be attached to reports, ensuring comprehensive evidence is logged.

Efficient Monitoring and Triage

- The Safeguarding Team continuously monitors reports, enabling rapid triage and coordination with relevant authorities.

#UK26WSJ



Report immediately if you become aware of:

- A safeguarding concern about a young person or adult
- A disclosure of harm or abuse
- Welfare concerns (physical, emotional, neglect, online, sexual)
- Concerning behaviour from a volunteer, parent or YP
- Something that “doesn’t feel right”

#UK26WSJ



Summary of main concerns reported at South Korea WSJ



- Mental health
- Young people and alcohol
- Adult conduct
- Adult suspension
- Physical assaults on young people
- Sexual activity (consensual)
- Non recent allegations





Case Example 1

Alex, a 15-year-old participant has been withdrawing from activities over the last two days. He is normally energetic and engaged but you have noticed he has skipped activities, appears withdrawn and quiet. Another young person also tells you that Alex has been receiving unkind comments from another young person, but Alex doesn't want to 'make a fuss' and report this to leaders... what should you consider and what action should you take?

Case Example 2



You notice that Lizzie, a 16-year-old participant has started withdrawing from activities. She has been wearing long sleeves, despite the heat and has appeared tearful and overwhelmed. Lizzie tells you that she doesn't want to be alive and that she is feeling hopeless. Lizzie also says that she is scared that her parents will find about this but says that she feels worse when away from home.

What should you consider and what actions should you take?

Case Example 3



Taylor, a 14 year old participant approaches you at the end of an evening activity. Taylor appears anxious and looking over her shoulder and asks if she can talk. Taylor tells you that a boy, aged 16 from another country's contingent won't leave her alone. Taylor tells you that the boy has been making unwanted comments and during an activity the boy touched Taylor in a way that made her feel uncomfortable and unsafe. The boy also asked Taylor to send him a nude photo.

What would you consider/what would you do?

Case Example 4



A 19-year-old adult volunteer (IST member) called Zak is assigned to support activity areas. Daisy, a 17-year-old participant from a different contingent attends that activity. Both individuals have spoken a few times, and the Zak has been friendly and helpful. Over several days they start sending private messages to each other. Zak invites the Daisy away from their unit to hang out. Daisy is overheard telling another young person about this.

What would you consider/what would you do?

Case Example 5



During a busy day, a small group of participants aged 16–17 from two different contingents decide to leave the Jamboree site without permission.

They take public transport into Gdańsk city centre, where they are served alcohol in a bar. One young person becomes drunk and starts feeling unwell. Another tries to help but is also under the influence and unable to provide safe support. A member of the public becomes concerned and calls local security.

Polish police approach the group and, realising they are Jamboree participants, contact WSJ organisers.

Meanwhile, leaders back at camp notice the young people have not returned at curfew and begin to raise concerns.

What would you consider/what would you do?



What we need from you...

From all participants:

Adults attending and YP & their parents/carers

- Welfare and Care Plans
- Consider own behaviour – Law and Promise
- Talk to others about expectations
- Communication





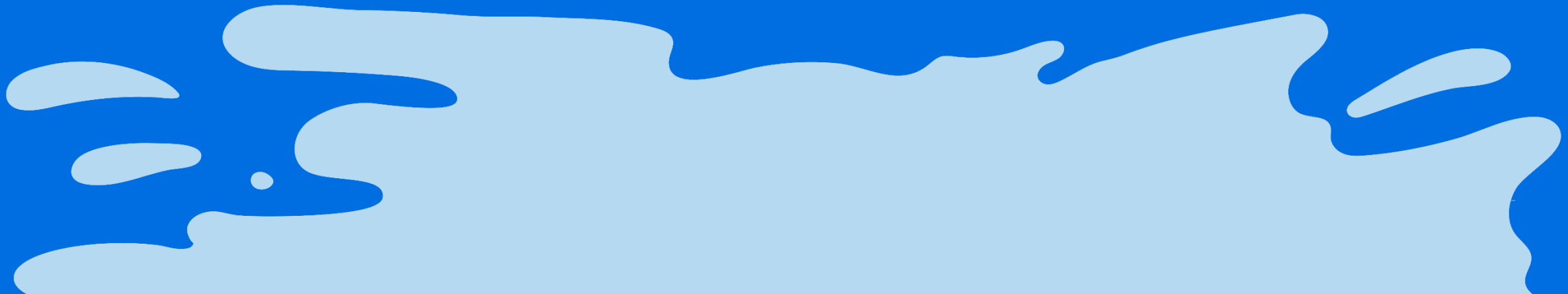
Think the unthinkable

Be inquisitive

Make sure people know
what to do if concerned

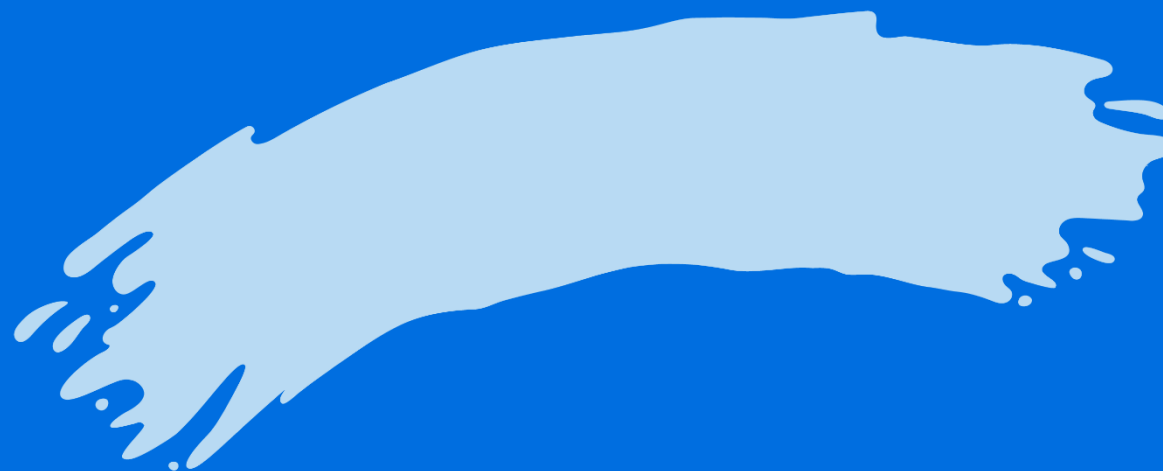


The standard you walk past is
the standard you accept





Thank you!



#UK26WSJ