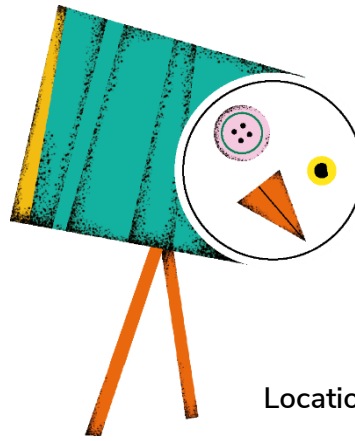


Wasted Creatures



Time | 20 mins

Cost | £

Location | Outdoors / Indoors

Group size | Teams

Upcycle litter into artistic garden ornaments with this creative craft.

You will learn

Value the outdoors

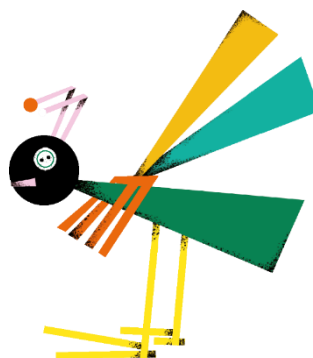
Enjoy being outside, feel comfortable in nature, and feel connected to the natural environment

Help your community

Be able to take an active role in the community, give to others, and make the world a better place.

You will need

- Clean items of recycling
- A4 paper
- Coloured pens or pencils
- Something to protect surfaces (for example, newspaper or tablecloths)
- Paint
- Paint brushes
- Scissors
- Craft materials (for example, tissue paper, pipe cleaners, stickers)
- Permanent markers
- Sticks
- Glue gun
- Device to take photos (optional)



Before we begin

- Everyone should collect clean items of household recycling, especially food packaging like plastic bottles, tins, lids and yoghurt pots.

Understand upcycling

1. Everyone should talk about upcycling, which is a great way to recycle old, damaged or broken items.

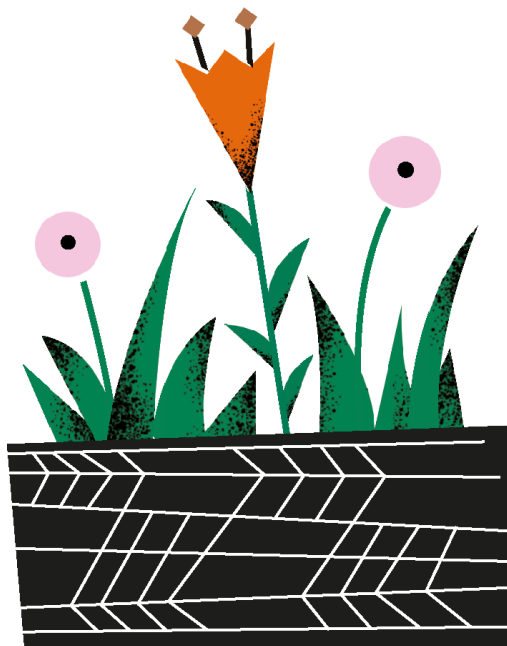
Upcycling means repairing or repurposing an item. For example, reupholstering an old piece of furniture so that it looks newer or is more comfortable means it can still be used and doesn't go to landfill. You can also upcycle items by finding a new way to use them. In this activity, we are turning food packaging into garden ornaments.

2. Discuss the environmental benefits of upcycling.

Upcycling means less waste in landfill. It is also more energy efficient than recycling, and it helps people take ownership of the things they consider 'rubbish' – thinking about whether they need to throw away and replace something or whether they could improve what they already have.

Get inspiration from the great outdoors

1. Everyone should split into small groups. If possible, each group should have a device to take photos.
2. Each group should explore a green space to get inspiration for their ornaments. You could visit a garden show, exhibition or museum. If you aren't able to get out and about, consider bringing in gardening magazines or doing research on the internet so everyone can look at different garden designs.
3. Each group should take photos or capture screenshots of the elements of nature which grab their attention, and look out for any ornaments in the green spaces.



Design time

1. Everyone should set out their clean items of recycling.
2. Guided by the shapes and sizes of the items, everyone should take inspiration from green spaces to turn this rubbish into ornaments which capture an element of nature.

The group could create animals or plants (for example using a plastic bottle as the body of an animal) or try to capture individual elements of beauty they see in nature: sunbeams through branches, ripples on a pond, or a flower's brightly coloured petals. Try doing some sketches first to visualise all the elements of the design.

3. Lay down something to protect the surfaces. Everyone should use paint to give all their items a strong base colour that suits their design.
4. While everything is drying (this usually takes at least half an hour), everyone should start adding features. For an animal, cut out scraps of plastic to make fins, wings, ears or tails. Depending on the thickness of the plastic, you may need to use craft scissors.
5. Everyone should paint their features and wait for everything to dry.
6. Assemble all the items and features using a glue gun.
7. Everyone should add finishing touches. You could draw stripes or dots on the body of an animal using marker pens, or add antennae by gluing on pipe cleaners or pom-poms.
8. Everyone should attach one end of a stick to their creation using a glue gun.
9. Everyone should help clear up, making sure any unused items are recycled. Be careful of sharp edges.
10. Everyone should find a home for their garden ornament. Try getting in touch with a local community area and see if they have any outdoor space in need of some brightening up, or sell your crafts to raise money for a cause you're passionate about.



Reflection

Time	Activity
10 mins	This activity was all about valuing the outdoors by noticing the beauty in nature and brightening up outdoor spaces and helping your community by finding ways to reuse items that would otherwise be thrown away. Did the group find anything particularly fun or challenging about this crafty activity? Why did they pick that particular animal, plant or element of nature to base their ornament on? The group might have been inspired by the location their ornaments were going to be put in, or maybe they took inspiration from their recycled items and created something with a similar shape to a bottle or tin.

Change the level of challenge



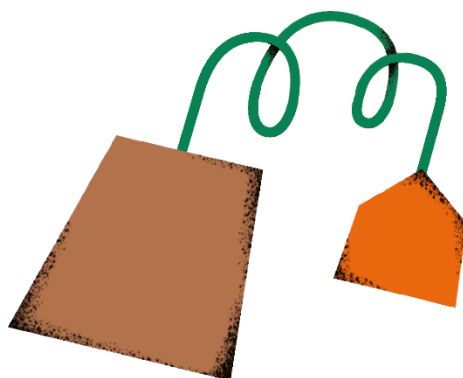
Consider turning walk in a green space into a litter picking excursion and using the items you gather to craft the ornaments.

Make it accessible

All Scout activities should be **inclusive and accessible**.

Take it further

Combine everyone's ornaments into a community exhibition, which informs people about the impact of food packaging on the environment and how we can tackle plastic pollution. This will also help you work towards steps four and five of your [Community Impact Staged Activity Badge](#).



Safety

All activities must be safely managed. Use the [safety checklist](#) to help you plan and risk assess your activity. Do a [risk assessment](#) and take appropriate steps to reduce risk. Always get approval for the activity and have suitable [supervision](#) and an [InTouch](#) process.

- **Rubbish and recycling**

All items should be clean and suitable for this activity.

- **Scissors**

Supervise young people appropriately when they're using scissors. Store all sharp objects securely, out of the reach of young people.

- **Sharp objects**

Teach young people how to use sharp objects safely. Supervise them appropriately throughout. Store all sharp objects securely, out of the reach of young people.

- **Garden and nature**

Everyone must wash their hands after the activity has finished. Wear gloves if needed. Explain how to safely use equipment and set clear boundaries so everyone knows what's allowed.

- **Glue and solvents**

Supervise young people appropriately when they're using glue and solvent products. Make sure there's plenty of ventilation. Be aware of any medical conditions which could be affected by glue or solvent use and make adjustments as needed.

- **Hand tools**

- Tools such as irons and glue guns produce a lot of heat. Never touch the hot metal parts. Use them under adult supervision and on a suitable surface, protecting it if necessary.
- Don't leave hot tools unattended and be careful near combustible materials such as wood, textiles, or paper. Make sure there's a fire extinguisher and a first aid kit (with items to treat burns) nearby.
- Always follow the manufacturer's instructions for proper use. You may need to use gloves and safety goggles with glue guns.

