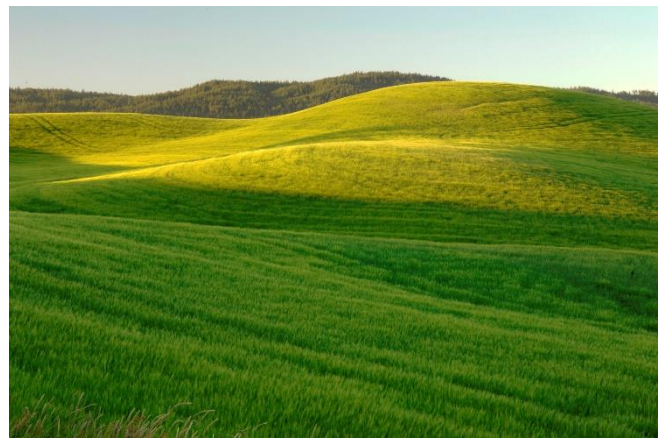


Where's safe to ski?



From top left, moving clockwise:

- Frozen lake
- Waterfall
- Piste or nursery slope (safe)
- On grass
- Ravine
- Off-piste
- Dry ski slope (safe)
- Indoor ski centre (safe)

Advice

- Skiing is best on fresh snow, but is also possible on artificial surfaces.
- Ski resorts are built in the mountains in safe areas avalanches can't reach.
- Ski runs called pistes are assigned a difficulty rating which is indicated by coloured flags. A green flag generally means it's a beginner piste, a black flag shows it's a piste for very skilled skiers.
- Ski runs are often quite flat and smooth. The surface is usually maintained by machines.