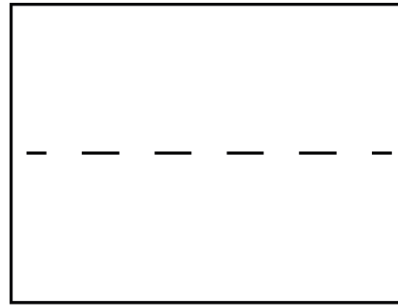


Illustrated instructions

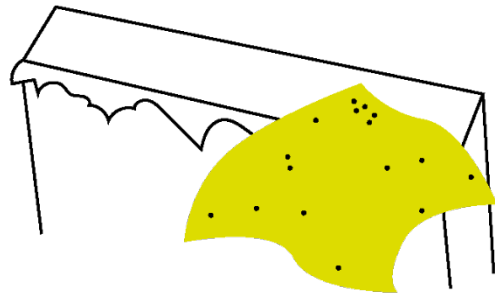


Follow these simple steps to create a sturdy stand.

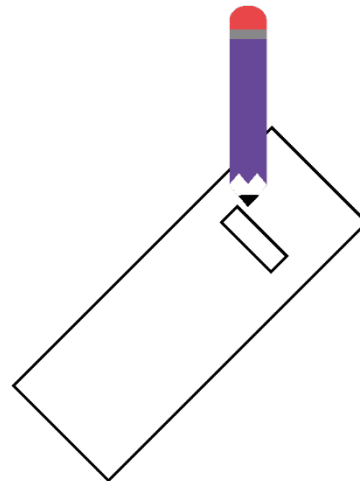
1. Give everyone a piece of wood. Mark a line halfway across the piece and cut carefully with a saw.



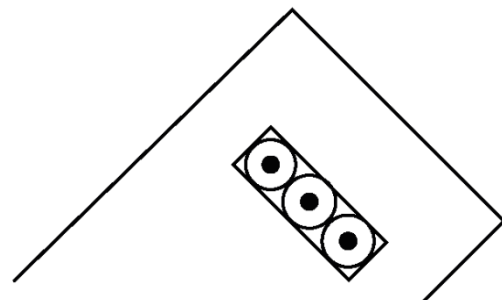
2. Smooth cut edges of the wood with sandpaper or a rasp.



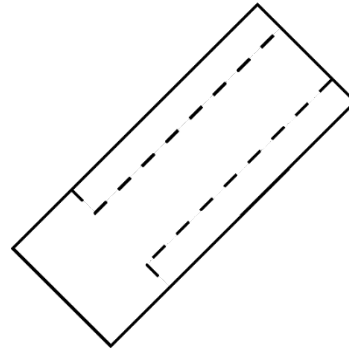
3. Mark a rectangle on one piece of the wood, as wide as the thickness of the wood. This will be the slot.



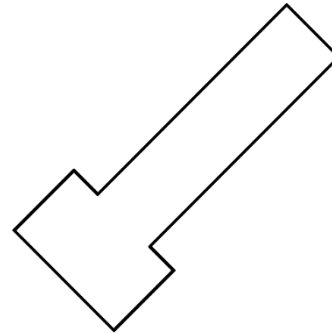
4. Drill holes inside the marked rectangle to create the slot and use a saw or rasp to clean it up and make it square.



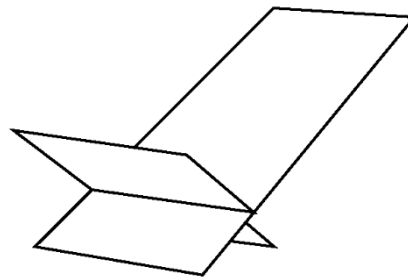
5. On the second piece of wood mark out a paddle shape, using the slot as a guide for width.



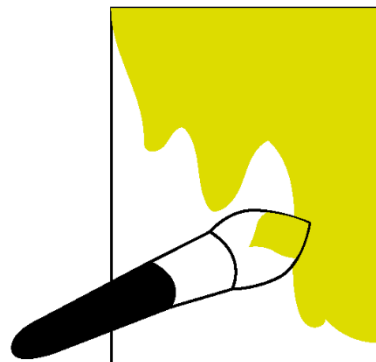
6. Cut along the lines with a saw and use sandpaper to smooth any rough edges.



7. Check the fit of the two parts. Sand or rasp the slot or paddle parts to change the fit.



8. Decorate or paint your creation however you like.



9. Finished!

