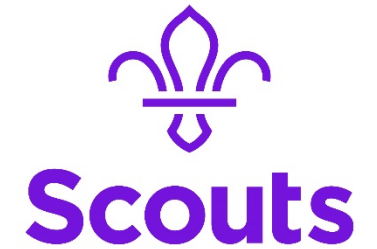
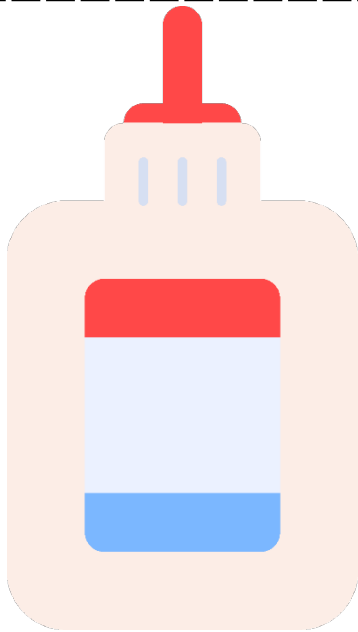


Mystery clues

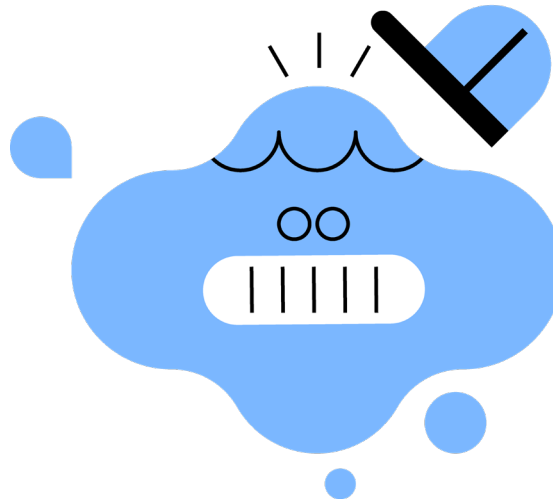
Print and cut these out, then hide them around the room.



Easy clues



Glue



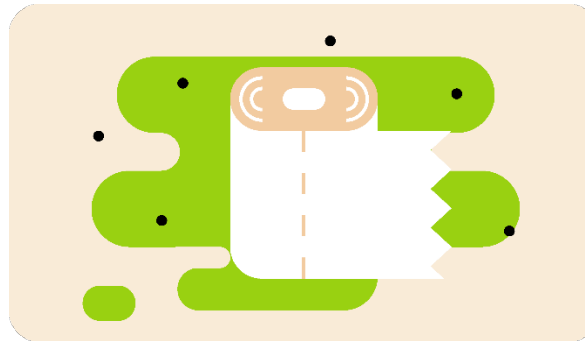
Blue



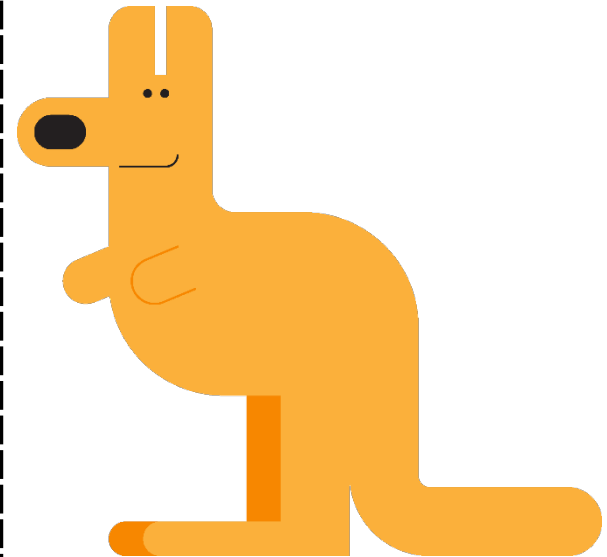
Boo



Zoo



Loo

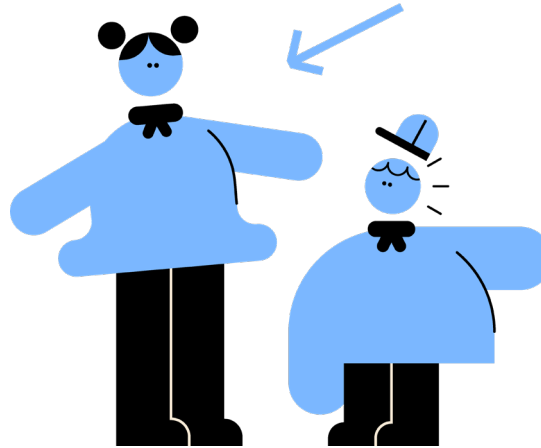


Kangaroo

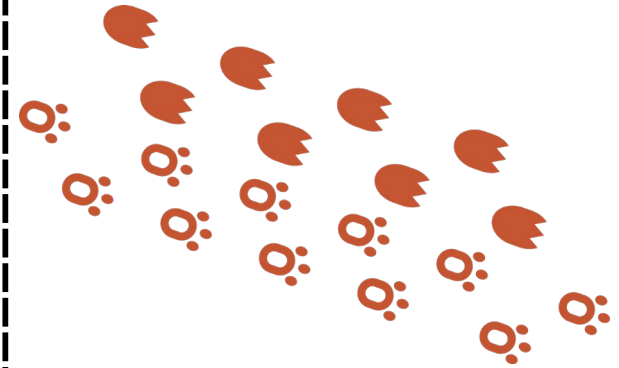
Difficult clues



Clue 1



Clue 2



Clue 3

What am I?
I get sold in a box but I'm not breakfast cereal.
I come as a pair but I'm not glasses.
I can be shined but I'm not a flashlight.
I have a tongue but I can't speak.
I'm worn on your feet but I'm not socks.

Clue 4

It is in a dark place,
that travels far and wide.
It smells really quite bad,
and can get hot inside.

Clue 5